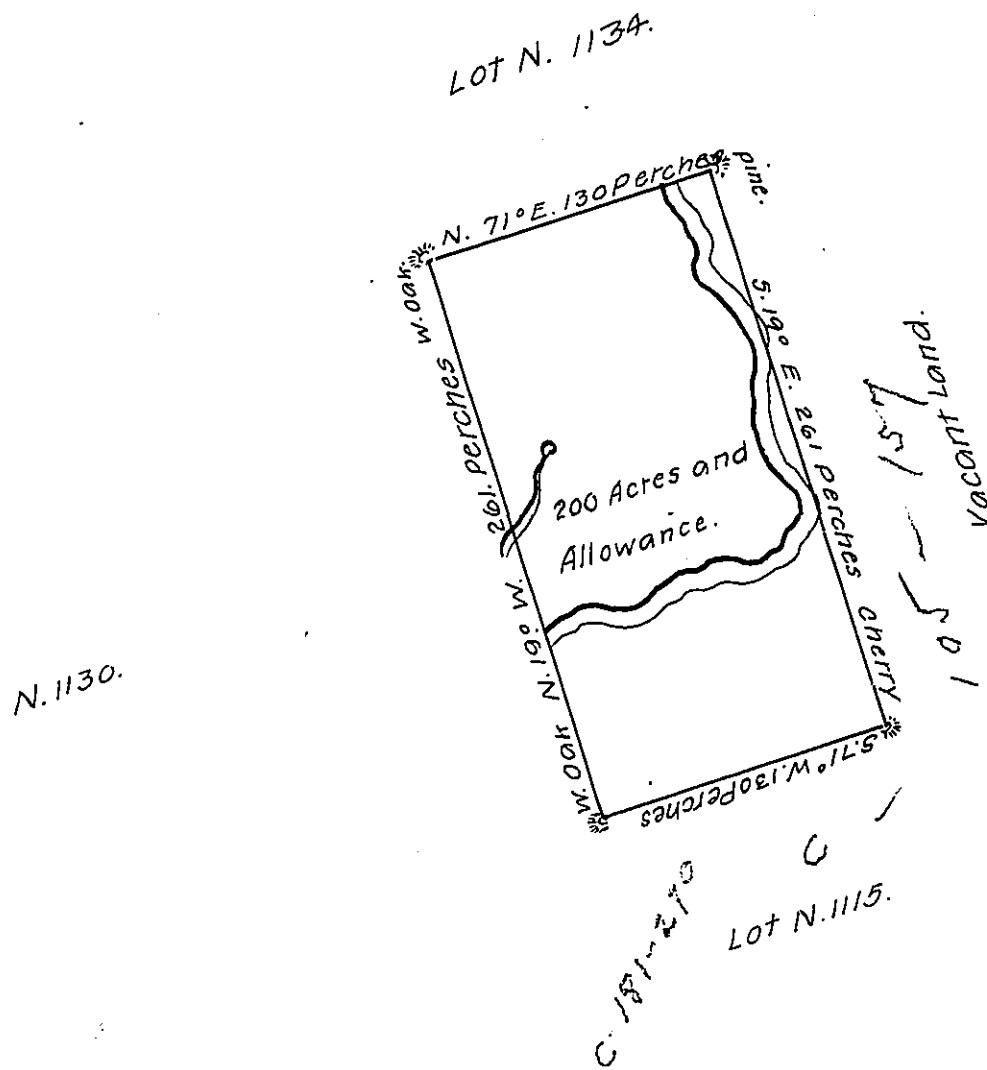


FORM NO 1.

Donation-Land, in District No 6  
Lot, No. MXXXXI



In Pursuance of an Act of General Assembly of the State of Pennsylvania, passed the twenty-fourth Day of February 1785, intituled, 'An Act for directing the Mode of distributing the Donation-Lands promised to the Troops by this Commonwealth,' and by Order of the Surveyor-General, with the Approbation of the Honourable the Executive Council, I have surveyed, on the ninth Day of November 1785, the above described Tract of Two Hundred Acres of Land, and Allowance of six per Cent. for Roads, &c. No. 1131, situate in District No. 6, on the West side of the Allegheny River, in the County of Westmoreland.

John Lukens, Esq.,  
Surveyor-General.

Ja: Chrystie Deputy Surveyor.

IN TESTIMONY that the above is a copy of the original remaining on file in the Department of Internal Affairs of Pennsylvania, made conformably to an Act of Assembly approved the 16th day of February, 1833, I have hereunto set my Hand and caused the Seal of said Department to be affixed at Harrisburg, this fifteenth day of July, 1908.

*Henry Howard*  
Secretary of Internal Affairs.